

# ENTRY & INTERIOR DOORS

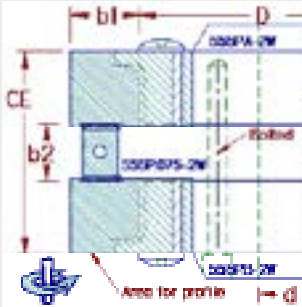


**ROYCE//AYR**

CUTTING TOOLS

### RAIL INTERIOR DOOR ASSEMBLY

Assembly can be run on Shaper, Moulder, or CNC router. Multi-profile system allows assortment of profiles to be run on one set of tooling.



D	d	b1	b2	CE
110mm (4.33")	1.25"	22mm (.787")	6.35mm (1/4"), 9.5mm (3/8") 12.7mm (1/2"), 19.05mm (3/4")	67mm (2.63") to 54mm (2.13")

Can be Rebored up to 40mm

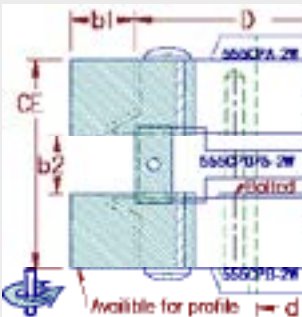


**OPTIONAL TOOLHOLDERS**

SPINDLE	PART
HSK63F	PRC-HSK63F-12580
HSK80W	PRC-HSK80W-40080

### STILE INTERIOR DOOR ASSEMBLY

Assembly can be run on Shaper or CNC router. Multi-profile system allows assortment of profiles to be run on one set of tooling.



D	d	b1	b2	CE
110mm (4.33")	1.25"	22mm (.787")	6.35mm (1/4"), 9.5mm (3/8") 12.7mm (1/2"), 19.05mm (3/4")	67mm (2.63") to 54mm (2.13")

Can be Rebored up to 40mm



**OPTIONAL TOOLHOLDERS**

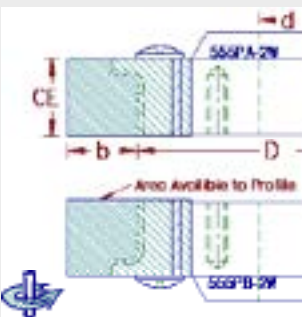
SPINDLE	PART
HSK63F	PRC-HSK63F-12580

### RAIL ASSEMBLY COMPONENTS

**MULTI-PROFILE CUTTERHEADS**

PART	D	d	b	CE
555P.A-2W	110mm (4.33")	1.25"	22mm (.787")	25mm (.984")
555P.B-2W	110mm (4.33")	1.25"	22mm (.787")	25mm (.984")

Can be rebored up to 40mm



**GROOVE CUTTERS**

PART	D	d	CE	z
555P.025-2W	148.1mm (5.830")	1.25"	6.35mm (.250")	2
555P.038-2W	148.1mm (5.830")	1.25"	9.5mm (.375")	2+2+2
555P.050-2W	148.1mm (5.830")	1.25"	12.7mm (.500")	2+2+2
555P.075-2W	148.1mm (5.830")	1.25"	19.05mm (.750")	2+2+2

Can be rebored up to 40mm  
■ PCD

**FOR GLASS DOORS**

PART	D	d	CE	z
555P.150-2W	148.1mm (5.830")	1.25"	40mm (1.57")	2+2

Can be rebored up to 40mm

### STYLE ASSEMBLY COMPONENTS

**MULTI-PROFILE CUTTERHEADS**

PART	D	d	CE	z
555CP.A-2W	110mm (4.33")	1.25"	25.4mm (.964")	2
555CP.B-2W	110mm (4.33")	1.25"	25.4mm (.964")	2

Can be rebored up to 40mm

**CENTER CUTTERS**

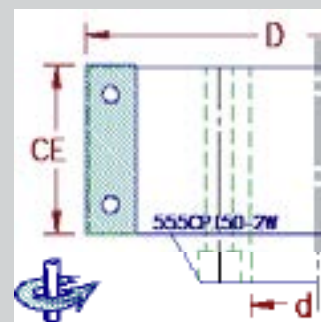
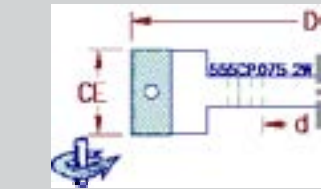
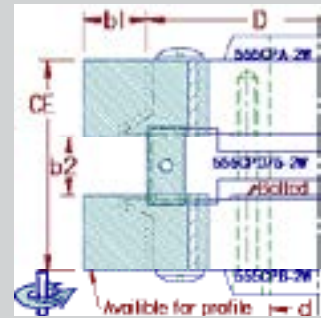
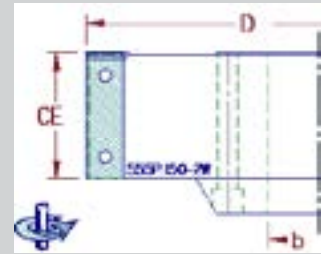
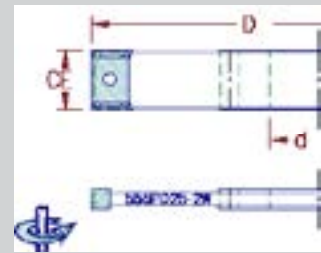
PART	D	d	CE	z	with/avec
555CP.038-2W	110mm (4.33")	1.25"	12mm (.472")	2	555P.025-2W 555P.037-2W
555CP.075-2W	110mm (4.33")	1.25"	25mm (.984")	2	555P.050-2W 555P.075-2W

Can be re-bored up to 40mm

**FOR GLASS DOORS**

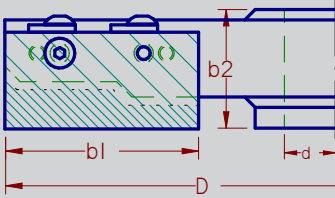
PART	D	d	CE	z
555CP.150-2W	110mm (4.33")	1.25"	40mm (1.57")	2

Can be re-bored up to 40mm



## RAISED PANEL CUTTERHEAD

Assembly can be run on Shaper or CNC router. Multi-profile system allows assortment of profiles to be run on one set of tooling.



PART	D	d	b1	b2
555RP-205.060.3W.RH	205mm (8.07")	1.25"	60mm (2.36")	36.75mm (1.447")
555RP-205.060.3W.LH	205mm (8.07")	1.25"	60mm (2.36")	36.75mm (1.447")



### OPTIONAL TOOLHOLDERS

SPINDLE	PART
HSK63F	PRC-HSK63F-12580

**CDN** ■ 405 Sheldon Drive  
Cambridge, ON  
N1T 2B7

**USA** ■ 6391 Walmore Road  
Niagara Falls  
NY 14304

